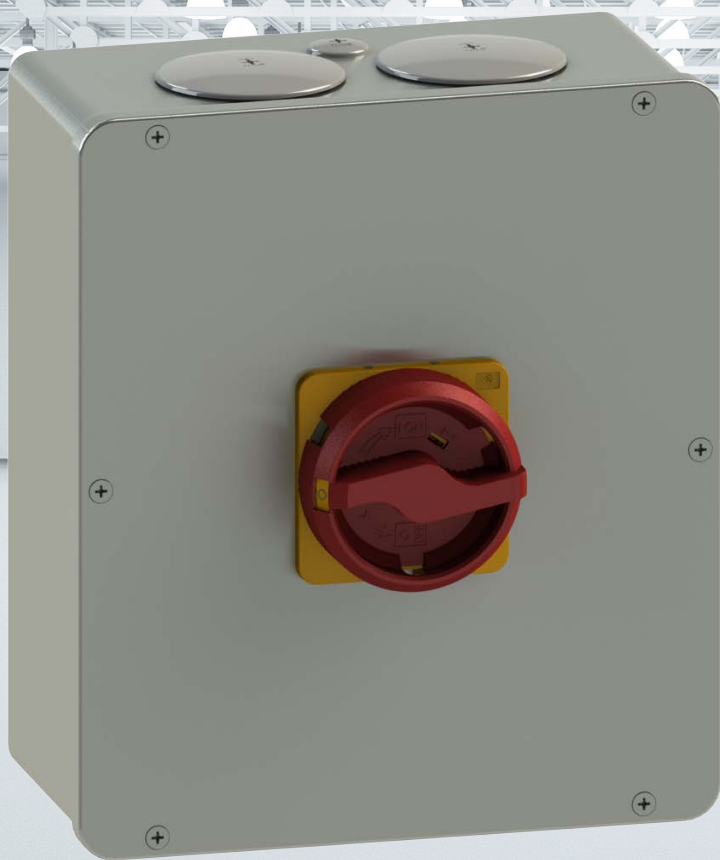
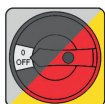


隔离开关ML 1-3系列 Disconnect Switches ML 1-3

外壳封闭式-室内用
Enclosure indoor application



UL50E认证-国际防护等级认证 NEMA Type 4X
UL50E Approved - NEMA Type 4X



依设计需求提供多色搭配
Available colours for all housing designs



Switch to Quality!

ML全系列 - 铝制外壳

Complete types Series ML - Aluminium enclosure

维修和保养开关

铝制外壳主电源开关

设计：手柄/前部：黑色/灰色 (sw / gr)

铝制外壳紧急停止开关安装

设计：手柄/前部：红色/黄色 (rd / ye)

外壳：适合室内用

Repair- / Maintenance switch

as Main Switch in aluminium enclosure

handle/front in black/grey bk/gr or

as Emergency-Off Switch in aluminium enclosure

handle/front in red/yellow rd/ye

Enclosure: indoor application



铝制外壳

美规带锁旋钮

锁孔三方面可选挂

钩环最大直径9 mm

ML-带端子盖的开关

美规带锁旋钮

红/黄(rd / ye) 黑色/灰色(bk / gr)

单体成型抗冲击

随拆随装，含密封塞 (不含电缆头)

可根据客户要求烤漆 (标准：铝原料)

具高度防护

Aluminium enclosure

with lockout handle for 3 padlocks

with shackle diameter up to 9 mm,
ML -switches with terminal cover

handle/front plate red/yellow rd/ye
or black/grey bk/gr

Extremely robust and impact resistant

Ready to mount, including sealing plug screws
without cable glands

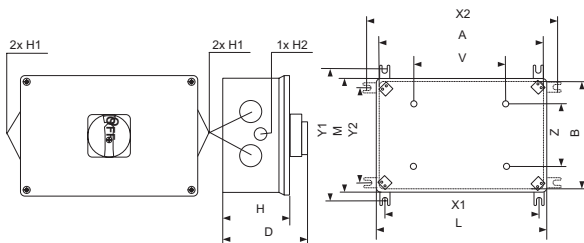
Painting according to customer requirements
(standard: aluminium raw)

High degree of protection

防护等级认证 IP 65

IP65

尺寸 / Dimensions



规格 Series	尺寸 (毫米) Dimensions (mm)												
	A	B	H	L	M	X1	Y1	X2	Y2	Z	V	D	H1
AL-2	160	135	81	167	142	147	149	174	122	104	88	114	M32
AL-3	185	160	96	192	167	172	174	199	147	129,5	114,5	129	M32
AL-4	247	212	102	254	219	234	226	261	199	178	172	140	M40
AL-5	295	255	130	302	262	282	269	309	242	215	230	168	M63



接点排列
Contact arrangement

Dauerstrom I_{th}
Rated
Uninterrupted
current I_{th}
A

Leistung
Rating
AC 3
kW

Leistung
Rating
AC 23A
kW

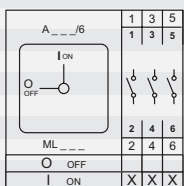
Baureihe
Series

Griff-/
Frontschild
handle/
front plate

Typ
Type

Best.Nr.
Part #

3极 3-pole	25	7,5	11	ML1	rt/ge rd/ye	ML1-025-V-AL2-2020U	MZ 33 162D
	25	7,5	11	ML1	sw/si bk/si	ML1-025-V-AL2-2021U	MZ 33 163D
	40	11	15	ML1	rt/ge rd/ye	ML1-040-V-AL3-2020U	MZ 35 162D
	40	11	15	ML1	sw/si bk/si	ML1-040-V-AL3-2021U	MZ 35 163D
	63	22	30	ML2	rt/ge rd/ye	ML2-063-V-AL4-1850	MZ 37 162
	63	22	30	ML2	sw/si bk/si	ML2-063-V-AL4-1851	MZ 37 163
	63	30	37	ML2	rt/ge rd/ye	ML2-080-V-AL5-1850	MZ 39 162
	63	30	37	ML2	sw/si bk/si	ML2-080-V-AL5-1851	MZ 39 163
	100	37	45	ML3	rt/ge rd/ye	ML3-125-V-AL5-1850	MZ 41 162
	100	37	45	ML3	sw/si bk/si	ML3-125-V-AL5-1851	MZ 41 163





接点排列
Contact arrangement

Dauerstrom
Rated
Uninterrupted
current I_{th}
A

Leistung
Rating
AC 3
kW

Leistung
Rating
AC 23A
kW

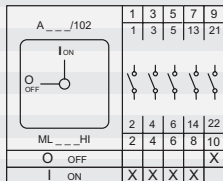
Baureihe
Series
ML

Griff-/
Frontschild
handle/
front plate
rt/ge rd/ye
sw/si bk/si

Typ
Type

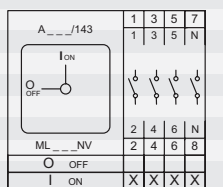
Best.Nr.
Part #

3极 + 1NC + 1NO
3-pole + 1NC + 1NO



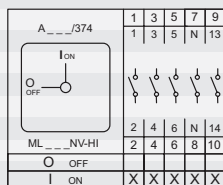
25	7,5	11	ML1	rt/ge rd/ye	ML1-025-V-AL2-2020U-HI	MZ 33 164D
25	7,5	11	ML1	sw/si bk/si	ML1-025-V-AL2-2021U-HI	MZ 33 165D
40	11	15	ML1	rt/ge rd/ye	ML1-040-V-AL3-2020U-HI	MZ 35 164D
40	11	15	ML1	sw/si bk/si	ML1-040-V-AL3-2021U-HI	MZ 35 165D
63	22	30	ML2	rt/ge rd/ye	ML2-063-V-AL4-1850-HI	MZ 37 164
63	22	30	ML2	sw/si bk/si	ML2-063-V-AL4-1851-HI	MZ 37 165
63	30	37	ML2	rt/ge rd/ye	ML2-080-V-AL5-1850-HI	MZ 39 164
63	30	37	ML2	sw/si bk/si	ML2-080-V-AL5-1851-HI	MZ 39 165
100	37	45	ML3	rt/ge rd/ye	ML3-125-V-AL5-1850-HI	MZ 41 164
100	37	45	ML3	sw/si bk/si	ML3-125-V-AL5-1851-HI	MZ 41 165

4极
4-pole



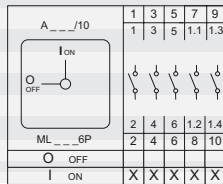
25	7,5	11	ML1	rt/ge rd/ye	ML1-025-V-AL2-2020U-NV	MZ 33 166D
25	7,5	11	ML1	sw/si bk/si	ML1-025-V-AL2-2021U-NV	MZ 33 167D
40	11	15	ML1	rt/ge rd/ye	ML1-040-V-AL3-2020U-NV	MZ 35 166D
40	11	15	ML1	sw/si bk/si	ML1-040-V-AL3-2021U-NV	MZ 35 167D
63	22	30	ML2	rt/ge rd/ye	ML2-063-V-AL4-1850-NV	MZ 37 166
63	22	30	ML2	sw/si bk/si	ML2-063-V-AL4-1851-NV	MZ 37 167
63	30	37	ML2	rt/ge rd/ye	ML2-080-V-AL5-1850-NV	MZ 39 166
63	30	37	ML2	sw/si bk/si	ML2-080-V-AL5-1851-NV	MZ 39 167
100	37	45	ML3	rt/ge rd/ye	ML3-125-V-AL5-1850-NV	MZ 41 166
100	37	45	ML3	sw/si bk/si	ML3-125-V-AL5-1851-NV	MZ 41 167

4极+1NC + 1NO
4-pole + 1NC + 1NO



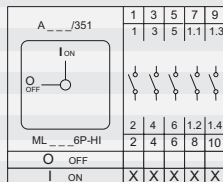
25	7,5	11	ML1	rt/ge rd/ye	ML1-025-V-AL2-2020U-NV-HI	MZ 33 168D
25	7,5	11	ML1	sw/si bk/si	ML1-025-V-AL2-2021U-NV-HI	MZ 33 169D
40	11	15	ML1	rt/ge rd/ye	ML1-040-V-AL3-2020U-NV-HI	MZ 35 168D
40	11	15	ML1	sw/si bk/si	ML1-040-V-AL3-2021U-NV-HI	MZ 35 169D
63	22	30	ML2	rt/ge rd/ye	ML2-063-V-AL4-1850-NV-HI	MZ 37 168
63	22	30	ML2	sw/si bk/si	ML2-063-V-AL4-1851-NV-HI	MZ 37 169
63	30	37	ML2	rt/ge rd/ye	ML2-080-V-AL5-1850-NV-HI	MZ 39 168
63	30	37	ML2	sw/si bk/si	ML2-080-V-AL5-1851-NV-HI	MZ 39 169
100	37	45	ML3	rt/ge rd/ye	ML3-125-V-AL5-1850-NV-HI	MZ 41 168
100	37	45	ML3	sw/si bk/si	ML3-125-V-AL5-1851-NV-HI	MZ 41 169

6极
6-pole



25	7,5	11	ML1	rt/ge rd/ye	ML1-025-V-AL3-2020U-6P	MZ 33 173D
25	7,5	11	ML1	sw/si bk/si	ML1-025-V-AL3-2021U-6P	MZ 33 174D
40	11	15	ML1	rt/ge rd/ye	ML1-040-V-AL3-2020U-6P	MZ 35 173D
40	11	15	ML1	sw/si bk/si	ML1-040-V-AL3-2021U-6P	MZ 35 174D
63	22	30	ML2	rt/ge rd/ye	ML2-063-V-AL4-1850-6P	MZ 37 173
63	22	30	ML2	sw/si bk/si	ML2-063-V-AL4-1851-6P	MZ 37 174
63	30	37	ML2	rt/ge rd/ye	ML2-080-V-AL5-1850-6P	MZ 39 173
63	30	37	ML2	sw/si bk/si	ML2-080-V-AL5-1851-6P	MZ 39 174
100	37	45	ML3	rt/ge rd/ye	ML3-125-V-AL5-1850-6P	MZ 41 173
100	37	45	ML3	sw/si bk/si	ML3-125-V-AL5-1851-6P	MZ 41 174

6极+ 1NC + 1NO
6-pole + 1NC + 1NO



25	7,5	11	ML1	rt/ge rd/ye	ML1-025-V-AL3-2020U-6P-HI	MZ 33 175D
25	7,5	11	ML1	sw/si bk/si	ML1-025-V-AL3-2021U-6P-HI	MZ 33 176D
40	11	15	ML1	rt/ge rd/ye	ML1-040-V-AL3-2020U-6P-HI	MZ 35 175D
40	11	15	ML1	sw/si bk/si	ML1-040-V-AL3-2021U-6P-HI	MZ 35 176D
63	22	30	ML2	rt/ge rd/ye	ML2-063-V-AL4-1850-6P-HI	MZ 37 175
63	22	30	ML2	sw/si bk/si	ML2-063-V-AL4-1851-6P-HI	MZ 37 176
63	30	37	ML2	rt/ge rd/ye	ML2-080-V-AL5-1850-6P-HI	MZ 39 175
63	30	37	ML2	sw/si bk/si	ML2-080-V-AL5-1851-6P-HI	MZ 39 176
100	37	45	ML3	rt/ge rd/ye	ML3-125-V-AL5-1850-6P-HI	MZ 41 175
100	37	45	ML3	sw/si bk/si	ML3-125-V-AL5-1851-6P-HI	MZ 41 176

辅助触点 (HI) 1NO + 1NC
Auxiliary contact (HI) 1NO + 1NC

如果已安装SK或NV触点, 则也可以在ML系列的右侧或左侧卡扣ML1-3。主触点和NO触点同时发生。
Snap on right or left side of series ML For ML1-3 also usable if a SK- or NV contact is installed. Main contacts and NO contact simultaneous.

auxiliary switch for series ML1 to ML3			Rated operational current I_o	120 V	A	6
auxiliary switch acc. UL508				600 V	A	1,2
Rated uninterrupted current I_u open = I_{th}	A	12	Cable cross section sol		AWG-No.	16
I_{th} encapsulated	A	12	Cable cross section str		AWG-No.	14
Rated insulation voltage U_i (III/3)	V	600	Terminal screws (PoZidrive)		M3	
			Torque terminal screws		Nm	0,6

Specifications

			ML1-025	ML1-040	ML2-063	ML2-080	ML3-125
Rated operating current I_e AC-21A	A		25	40	63	80	125
Rated voltage U_e	V		690	690	690	690	690
Rated uninterrupted current (open) $I_u=I_{th}$	A		25	40	63	80	125
Conventional enclosed thermal current I_{the}	A		25	40	63	63	100
Rated insulation voltage U_i	V				690	690	800
Insulation group C under VDE 0110			690	690			
Making/breaking capacity							
Service category AC-3							
Motor switch	230 V 3~	kW	5,5	7,5	15	18,5	22
for optional	400 V 3~	kW	7,5	11	22	30	37
switching	690 V 3~	kW	7,5	11	22	30	45
Service category AC-23A/B							
Motor switch	230 V 3~	kW	7,5/-	11/-	-/18,5	-/22	-/25
Main switch	400 V 3~	kW	11/-	15/-	-/30	-/37	-/45
Maintenance switch	690 V 3~	kW	11/-	15/-	-/30	-/37	-/45
Service category AC-22A/B							
Motor switch	230 V 3~	A	25/-	40/-	63/-	-/-	-/-
	400 V 3~	A	25/-	40/-	63/-	-/68	-/125
	690 V 3~	A	25/-	40/-	63/-	-/-	-/125
Rated conditional short-circuit current	kA		10	10	10	10	10
Rated short-time with stand current $I_{cw 1 sec}$	kA						
Max. Back up fuse Service class gG	A		50	50	63	80	125
Disconnect characteristic up to 690 V~	V		690	690	690	690	690
Terminal cross section							
single or multi-core	min./max.	mm ²	2,5 - 16	2,5 - 16	2,5 - 35	2,5 - 35	6 - 70
finely stranded with sleeve	min./max.	mm ²	1,5 - 10	1,5 - 10	1,5 - 25	1,5 - 25	6 - 50
Terminal screws			M4	M4	M5	M5	M6
Mechanical life							
switching cycles			30.000	30.000	30.000	30.000	30.000
Ambient temperature	open	C°	+60/-25	+60/-25	+70/-25	+70/-25	+75/-25
max./min.	encapsulated	C°	+45/-25	+45/-25	+50/-25	+50/-25	+55/-25
General purpose 3-phase							
rated operational current		A	25	40	63	80	125
		V	600	600	600	600	600
Motor 3-phase	AC-3						
	220/240 V 3~	hp	7,5	10	15	20	25
	440/480 V 3~	hp	10	20	30	40	50
	550/600 V 3~	hp	10	20	30	40	50
Motor 1-phase	AC-3						
(2 pole)	110/120 V 3~	hp	1	1,5	3	4	6
	220/240 V 3~	hp	2	3	7,5	10	15
Cable cross section	AWG-No		14 - 8	14 - 8	14 - 2	14 - 2	8 - 10

Member of PCE Group

Salzer USA Corporation
3802 N.54th Street
USA - Mesa AZ 85215
United States
www.saelzer.com
sales@salzerusa.com



MERZ Schaltgeräte GmbH + CO KG
Kernerstr. 15
D - 74405 Gaildorf
Germany
www.merz-schaltgeraete.de
info@merz-schaltgeraete.de



Switch to Quality!