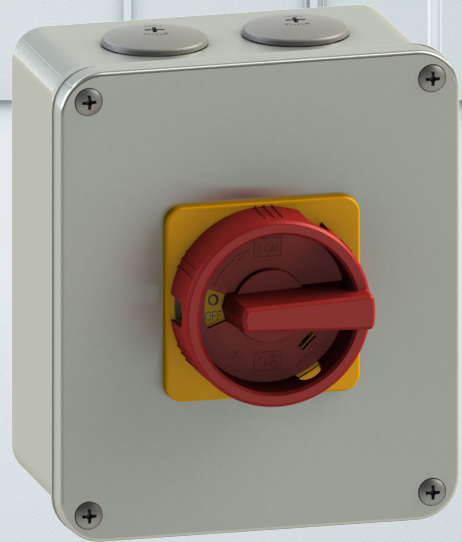
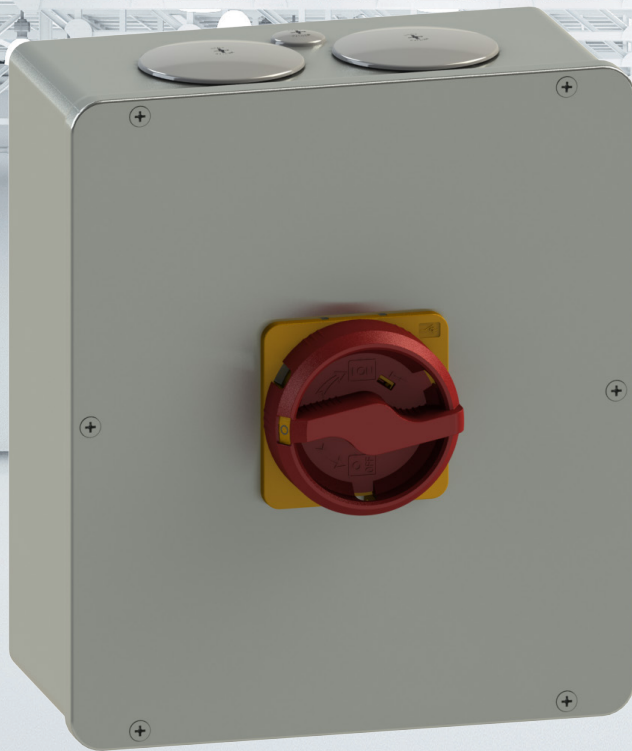


Disconnect Switches ML 1-3 Aluminium Enclosure - **NEMA Type 4X**



UL50E Approved - NEMA Type 4X




Available colours for all housing designs



Switch to Quality!

Specifications

			ML1-025	ML1-040	ML2-063	ML2-080	ML3-125
Rated operating current I_e	AC-21A	A	25	40	63	80	125
Rated voltage U_e		V	690	690	690	690	690
Rated uninterrupted current (open) $I_u=I_{th}$		A	25	40	63	80	125
Conventional enclosed thermal current I_{the}		A	25	40	63	63	100
Rated insulation voltage U_i		V			690	690	800
Insulation group C under VDE 0110			690	690			
Making/breaking capacity							
Service category	AC-3						
Motor switch	230 V 3~	kW	5,5	7,5	15	18,5	22
for optional switching	400 V 3~	kW	7,5	11	22	30	37
	690 V 3~	kW	7,5	11	22	30	45
Service category	AC-23A/B						
Motor switch	230 V 3~	kW	7,5/-	11/-	-/18,5	-/22	-/25
Main switch	400 V 3~	kW	11/-	15/-	-/30	-/37	-/45
Maintenance switch	690 V 3~	kW	11/-	15/-	-/30	-/37	-/45
Service category	AC-22A/B						
Motor switch	230 V 3~	A	25/-	40/-	63/-	-/-	-/-
	400 V 3~	A	25/-	40/-	63/-	-/68	-/125
	690 V 3~	A	25/-	40/-	63/-	-/-	-/125
Rated conditional short-circuit current		kA	10	10	10	10	10
Rated short-time with stand current $I_{cw 1 sec}$		kA					
Max. Back up fuse Service class gG		A	50	50	63	80	125
Disconnect characteristic up to 690 V~		V	690	690	690	690	690
Terminal cross section							
single or multi-core	min./max.	mm ²	2,5 - 16	2,5 - 16	2,5 - 35	2,5 - 35	6 - 70
finely stranded with sleeve	min./max.	mm ²	1,5 - 10	1,5 - 10	1,5 - 25	1,5 - 25	6 - 50
Terminal screws			M4	M4	M5	M5	M6
Mechanical life							
switching cycles			30.000	30.000	30.000	30.000	30.000
Ambient temperature	open	C°	+60/-25	+60/-25	+70/-25	+70/-25	+75/-25
max./min.	encapsulated	C°	+45/-25	+45/-25	+50/-25	+50/-25	+55/-25
Aluminium-Enclosure			AL2/3	AL2/3	AL4/5	AL4/5	AL4/5
General purpose 3-phase							
rated operational current		A	25	40	63	80	125
		V	600	600	600	600	600
Motor 3-phase	AC-3						
	220/240 V 3~	hp	7,5	10	15	20	25
	440/480 V 3~	hp	10	20	30	40	50
	550/600 V 3~	hp	10	20	30	40	50
Motor 1-phase	AC-3						
(2 pole)	110/120 V 3~	hp	1	1,5	3	4	6
	220/240 V 3~	hp	2	3	7,5	10	15
Cable cross section		AWG-No	14 - 8	14 - 8	14 - 2	14 - 2	8 - 10

AL2-5_1223/US-letter © by MERZ Schaltgeräte GmbH + CO KG - Subject to technical modifications and printing errors

Member of PCE Group

Salzer USA Corporation
 3802 N.54th Street
 USA - Mesa AZ 85215
 United States
 www.saelzer.com
 sales@salzerusa.com



MERZ Schaltgeräte GMBH + CO KG
 Kernerstr. 15
 D - 74405 Gaildorf
 Germany
 www.merz-schaltgeraete.de
 info@merz-schaltgeraete.de



Switch to Quality!